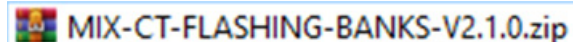


MIX[®] 2.1 FIRMWARE UPDATE PROCEDURE

The MIX 2.1 Firmware update is done by connecting the fixtures to your PC and following the instructions in the order they are presented below, also referred to as “Firmware Flashing.” The MIX 2.1.0 firmware must be flashed in two steps. These two steps are preconfigured in the new DFUSec named:



Please note this software is not suited for the DMG DASH™.

1. EXTRACT THE ZIP FILE

Do not re-use any of the previous flashing software files.

CalibrationLibraryV210.bin	✓	08/12/2021 14:18	Fichier BIN	166 Ko
DFUSec.exe	✓	18/12/2017 17:45	Application	547 Ko
DFUUTILini	✓	05/01/2022 19:07	Paramètres de con...	1 Ko
iram_dfu_util_any.bin.hdr	✓	18/12/2017 17:45	Fichier HDR	18 Ko
lct_installer_1.exe	✓	09/03/2018 13:54	Application	21 945 Ko
Mix flashing procedure V100.docx	☁	08/12/2021 17:32	Document Micros...	186 Ko
Mix flashing procedure V100.pdf	☁	08/12/2021 17:33	Adobe Acrobat D...	243 Ko
mix_update_software_double_bankini	✓	23/11/2021 15:55	Paramètres de con...	1 Ko
output.log	✓	23/11/2021 15:55	Document texte	1 Ko
PasteIV210.bin	✓	08/12/2021 14:17	Fichier BIN	421 Ko
program.log	☁	23/11/2021 15:55	Document texte	0 Ko

2. INSTALLING THE DRIVER

If you have never updated the MIX controller with your current computer, please install the drivers before moving to the next step.

Launch lct_installer_1.exe to install the drivers.



Completing the LPC-Link 2 Configuration Tool Setup Wizard

Click the "Finish" button to exit the Setup Wizard.

untick

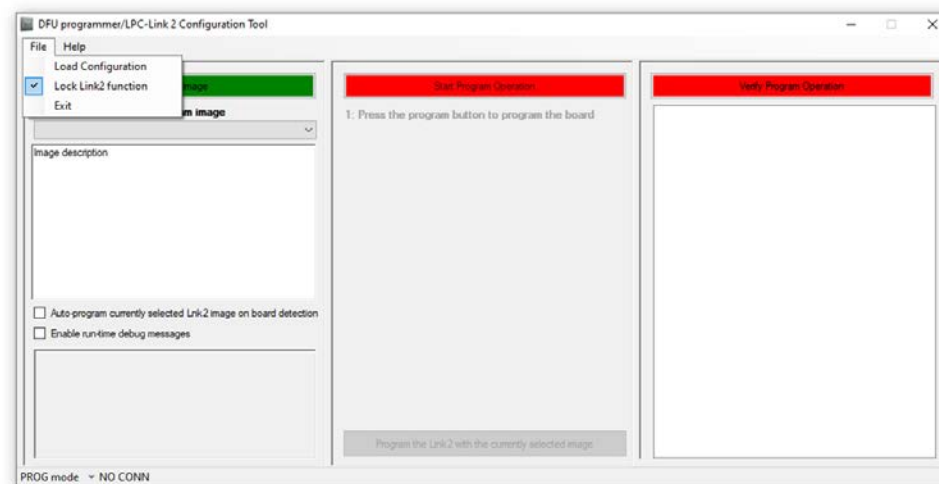
- ☐ View readme file
- ☐ Launch LPC-Link 2 Configuration Tool

3. LAUNCHING AND CONFIGURING

- Launch **DFUSec.exe**:

CalibrationLibraryV210.bin	✓	08/12/2021 14:18	Fichier BIN	166 Ko
DFUSec.exe	✓	18/12/2017 17:45	Application	547 Ko
DFUUTILini	✓	05/01/2022 19:07	Paramètres de con...	1 Ko
iram_dfu_util_any.bin.hdr	✓	18/12/2017 17:45	Fichier HDR	18 Ko
lct_installer_1.exe	✓	09/03/2018 13:54	Application	21 945 Ko
Mix flashing procedure V100.docx	☁	08/12/2021 17:32	Document Micros...	186 Ko
Mix flashing procedure V100.pdf	☁	08/12/2021 17:33	Adobe Acrobat D...	243 Ko
mix_update_software_double_bankini	✓	23/11/2021 15:55	Paramètres de con...	1 Ko
output.log	✓	23/11/2021 15:55	Document texte	1 Ko
PasteIV210.bin	✓	08/12/2021 14:17	Fichier BIN	421 Ko
program.log	☁	23/11/2021 15:55	Document texte	0 Ko

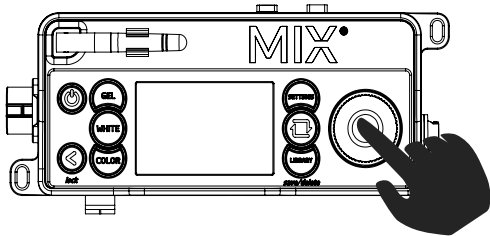
- Go to File and untick **Lock LINK2 function**:



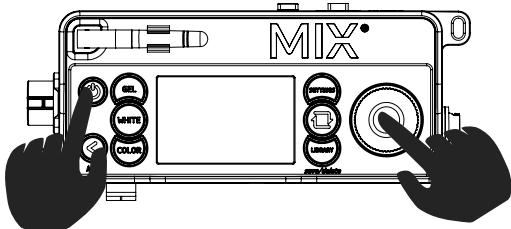
4. UPDATING THE CONTROLLER

Place controller in update mode by pressing both red dimmer & on/off buttons.

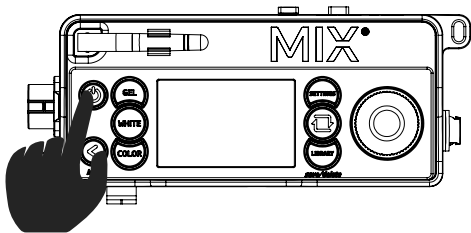
1. Connect the MIX controller to a power supply. If the controller turns ON, turn it back OFF.
2. Connect the MIX controller to this PC using a USB to Micro USB cable.
3. Press the red dimmer button and keep it pressed:



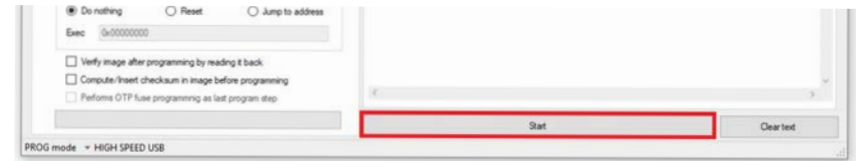
4. Turn on the MIX controller while keeping the dimmer button pressed:
Do not release the ON/OFF button!



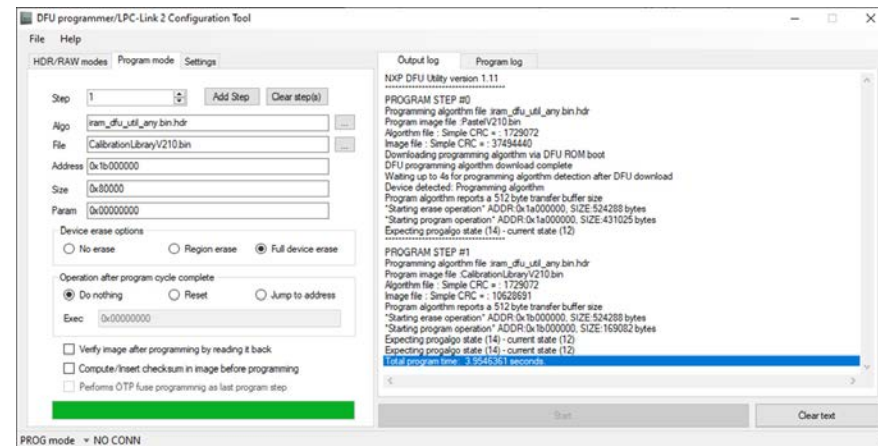
5. Release the dimmer button but keep the on/off button pressed.



6. Click **Start** to flash, wait until finished.



7. Check log message – two steps must be completed. (Step #0 and step #1 shown on page 3.)



Here we can confirm two steps have been executed properly.

UPDATE CONFIGURATION SELF-CHECK

To ensure flashing has been executed properly, check for the pre-configured Firmware V2.1.0 file names here:

The image displays two side-by-side screenshots of the 'DFU programmer/LPC-Link 2 Configuration Tool' interface. Both screenshots show the 'Program mode' tab with various configuration fields. In the left screenshot (Step 0), the 'Step' dropdown is set to 0, the 'File' field contains 'MIXV211.bin', and the 'Address' field is '0x1a000000'. In the right screenshot (Step 1), the 'Step' dropdown is set to 1, the 'File' field contains 'CalibrationLibraryV210.bin', and the 'Address' field is '0x1b000000'. Both screenshots also show 'Device erase options' with 'Full device erase' selected, and 'Operation after program cycle complete' with 'Do nothing' selected. The 'Exec' field in both is '0x00000000'. The 'PROG mode' dropdown at the bottom of both is set to 'NO CONN'.

DFU programmer/LPC-Link 2 Configuration Tool

File Help

HDR/RAW modes Program mode Settings

Step 0 Add Step Clear step(s)

Algo ram_dfu_util_any.bin.hdr

File MIXV211.bin

Address 0x1a000000

Size 0x80000

Param 0x00000000

Device erase options

☐ No erase ☐ Region erase ☒ Full device erase

Operation after program cycle complete

☒ Do nothing ☐ Reset ☐ Jump to address

Exec 0x00000000

☐ Verify image after programming by reading it back

☐ Compute/Insert checksum in image before programming

☐ Performs OTP fuse programming as last program step

PROG mode NO CONN

DFU programmer/LPC-Link 2 Configuration Tool

File Help

HDR/RAW modes Program mode Settings

Step 1 Add Step Clear step(s)

Algo ram_dfu_util_any.bin.hdr

File CalibrationLibraryV210.bin

Address 0x1b000000

Size 0x80000

Param 0x00000000

Device erase options

☐ No erase ☐ Region erase ☒ Full device erase

Operation after program cycle complete

☒ Do nothing ☐ Reset ☐ Jump to address

Exec 0x00000000

☐ Verify image after programming by reading it back

☐ Compute/Insert checksum in image before programming

☐ Performs OTP fuse programming as last program step

PROG mode NO CONN